

Launceston General Experiences

Holly Dodd

Infection Prevention and Control

Clinical Nurse Educator



- 
- I have no disclosures or conflicts to declare.

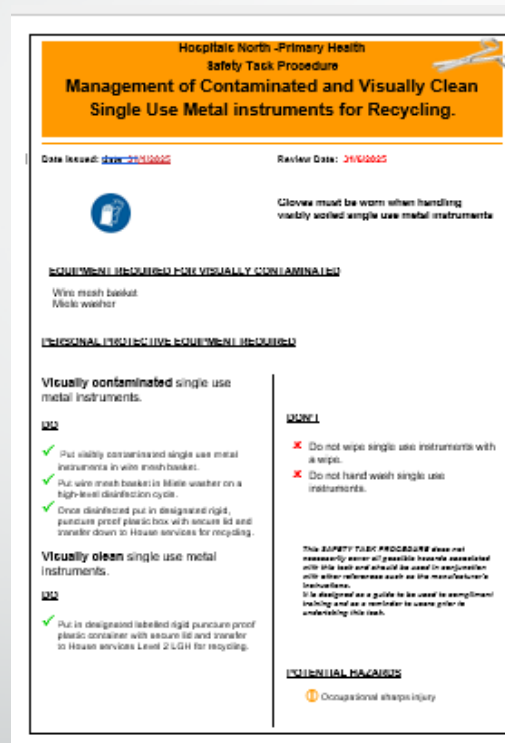
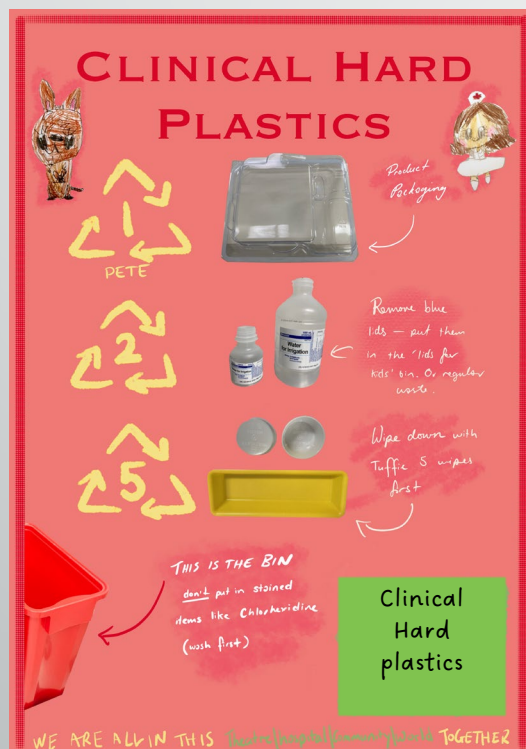
In recognition of the deep history
and culture of this Island, I
would like to acknowledge and
pay our respects to all
Tasmanian Aboriginal people;
the past and present custodians
of the Land.



Artwork adapted from Takira
Simon-Brown's *Health nayri*.



Our experiences



THEATRE RECYCLING



Single-use metal products (SUMI)

Hard plastics



Hard Plastics recycling in Theatre



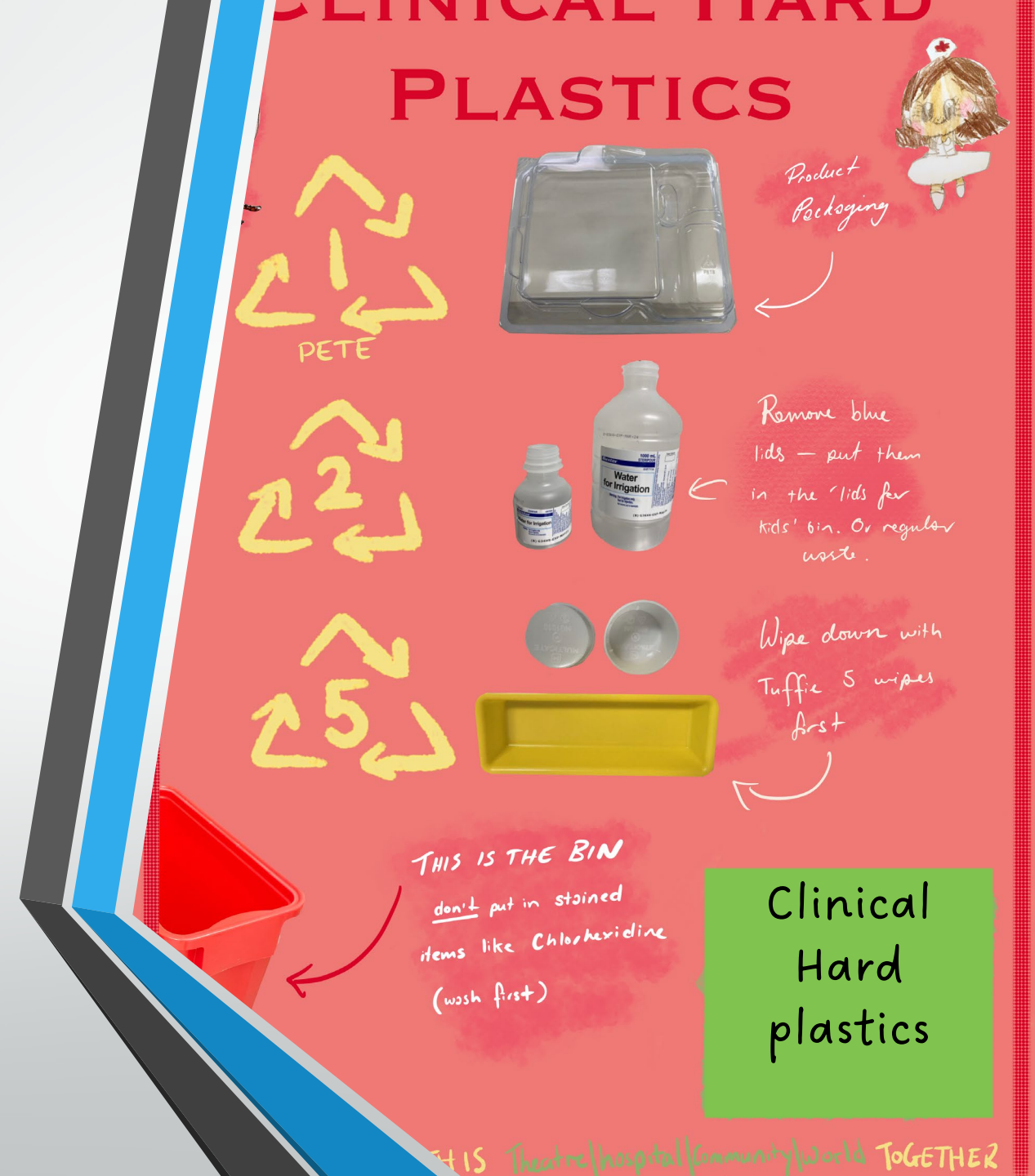
Hard Plastic recycling in Theatres

- Invested Team



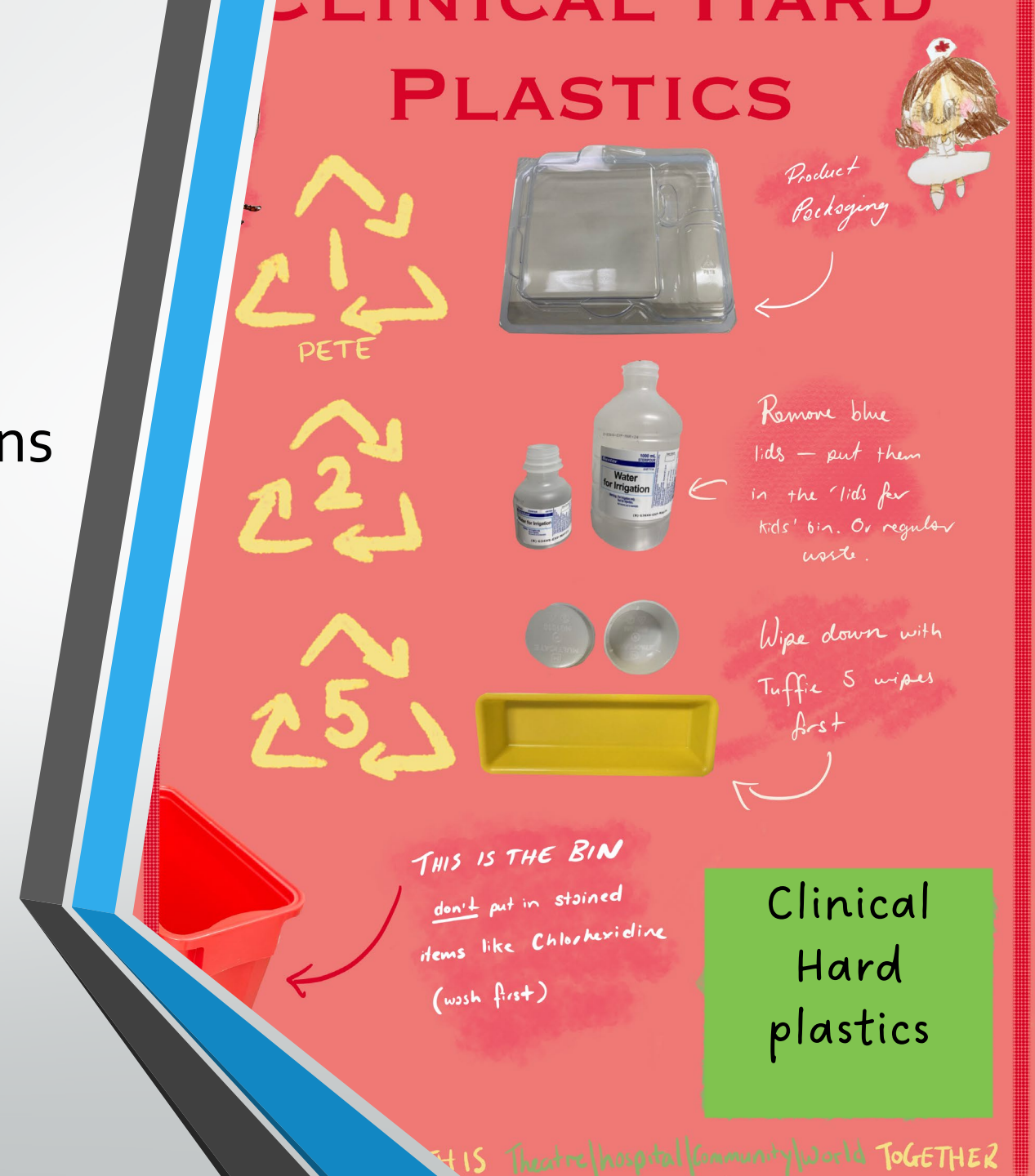
Hard Plastic recycling in Theatres

- Invested Team ✓ Bin chickens



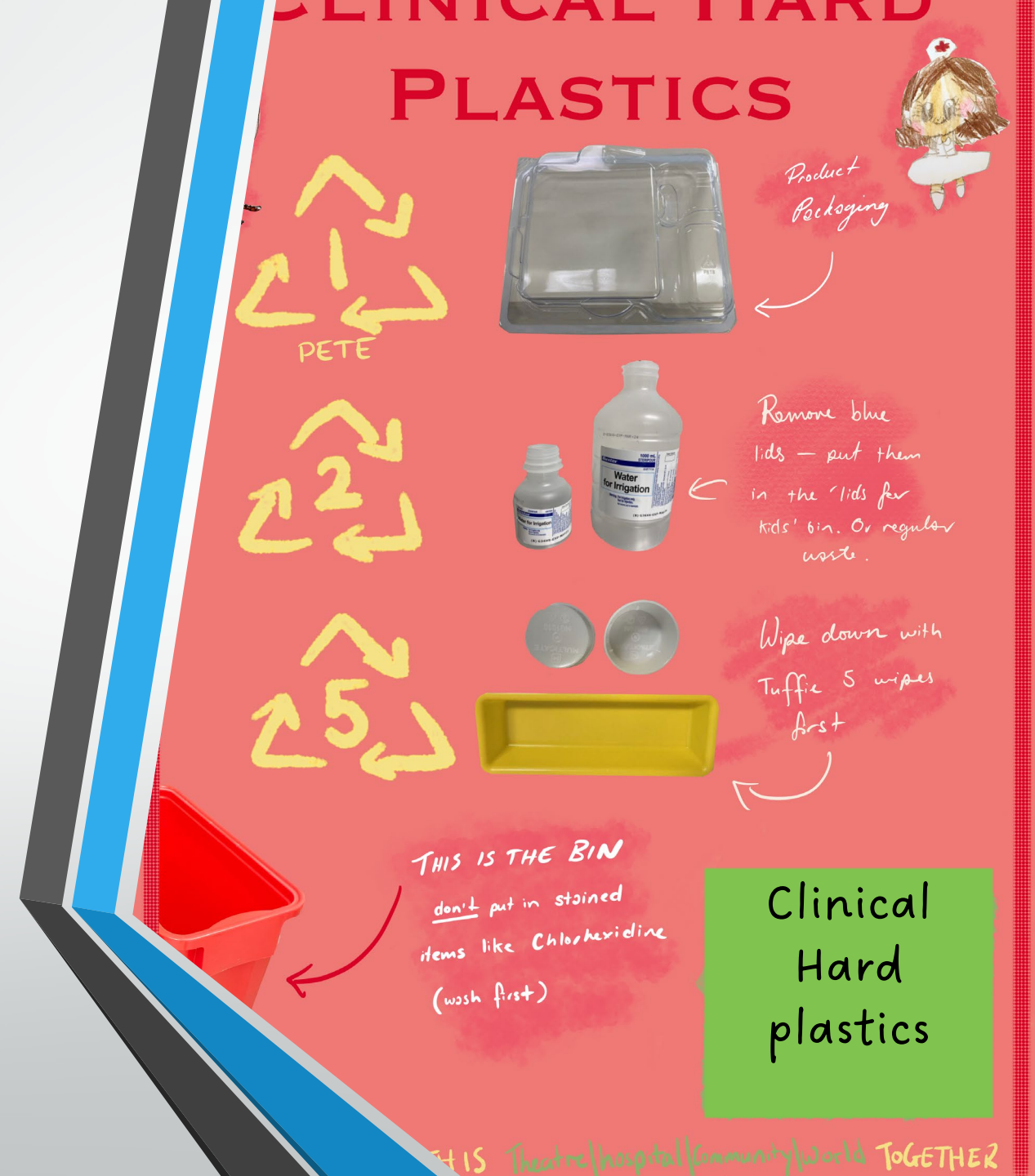
Hard Plastic recycling in Theatres

- Invested Team ✓ Bin chickens
- Robust process



Hard Plastic recycling in Theatres

- Invested Team ✓ Bin chickens
- Robust process ✓



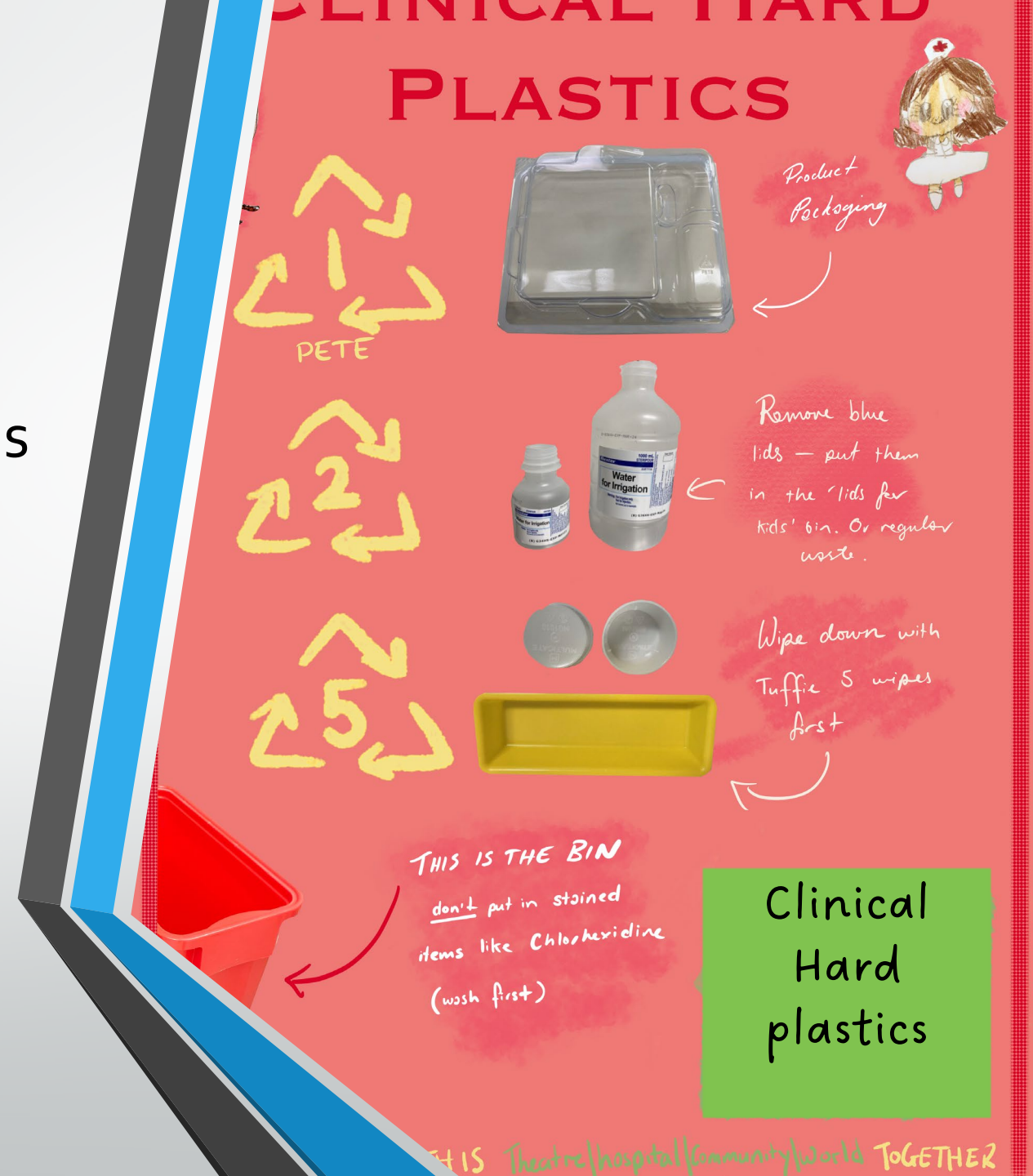
Hard Plastic recycling in Theatres

- Invested Team ✓ Bin chickens
- Robust process ✓
- Industry engagement



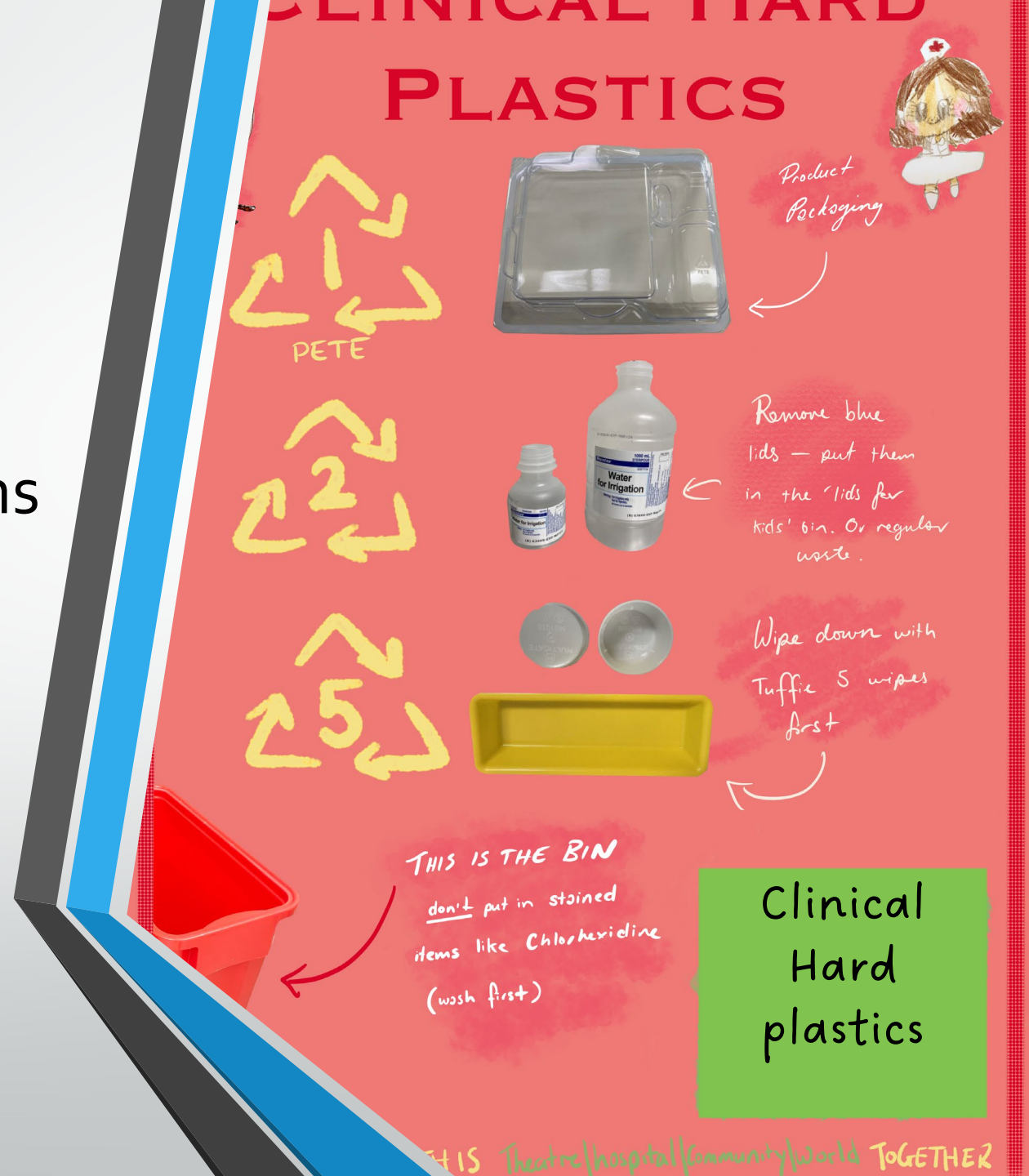
Hard Plastic recycling in Theatres

- Invested Team ✓ Bin chickens
- Robust process ✓
- Industry engagement ✓



Hard Plastic recycling in Theatres

- Invested Team ✓ Bin chickens
- Robust process ✓
- Industry engagement ✗



Hard Plastic recycling in Theatres


- Invested Team ✓ Bin chickens
 - Robust process ✓
 - Industry engagement ✗
- Site visit 🤔 🤢 😡



Single Use Metal Instrument recycling

Hospitals North -Primary Health
Safety Task Procedure
Management of Contaminated and Visually Clean Single Use Metal instruments for Recycling.

Date Issued: 26/01/2022 Review Date: 26/01/2025

 Glove must be worn when handling visibly soiled single use metal instruments

EQUIPMENT REQUIRED FOR VISUALLY CONTAMINATED
Wire mesh basket
Wipe washer

PERSONAL PROTECTIVE EQUIPMENT REQUIRED

Visually contaminated single use metal instruments.

DO

- ✓ Put visibly contaminated single use metal instruments in wire mesh basket.
- ✓ Put wire mesh basket in wipe washer on a high-level disinfection cycle.
- ✓ Once disinfected put in designated rigid, puncture proof plastic box with secure lid and transfer down to House services for recycling.

Visually clean single use metal instruments.

DO


- ✓ Put in designated labelled rigid puncture proof plastic container with secure lid and transfer to House services Level 2 LGH for recycling.

DO NOT

- ✗ Do not wipe single use instruments with a wipe.
- ✗ Do not hand wash single use instruments.

This SAFETY TASK PROCEDURE does not necessarily cover all possible hazards associated with this task and should be used in conjunction with other references such as the manufacturer's instructions.
It is designed as a guide to be used to exemplify best practice and as a reminder to users prior to undertaking this task.

ESSENTIAL MESSAGE


 Occupational sharps injury



Single Use Metal Instrument recycling

Hospitals North - Primary Health
Safety Task Procedure
**Management of Contaminated and Visually Clean
Single Use Metal instruments for Recycling.**

Date Issued: 24/10/2025 Review Date: 24/10/2025

 Gloves must be worn when handling visibly soiled single use metal instruments.

EQUIPMENT REQUIRED FOR VISUALLY CONTAMINATED
Wire mesh basket
Wipe wetter

PERSONAL PROTECTIVE EQUIPMENT REQUIRED

Visually contaminated single use metal instruments.

DO

- ✓ Put visibly contaminated single use metal instruments in wire mesh basket.
- ✓ Put wire mesh basket in sterile washer on a high-level disinfection cycle.
- ✓ Once disinfected put in designated rigid, puncture proof plastic box with secure lid and transfer down to House services for recycling.

Visually clean single use metal instruments.

DO

- ✓ Put in designated labelled rigid puncture proof plastic container with secure lid and transfer to House services Level 2 LGH for recycling.

DO NOT

- ✗ Do not wipe single use instruments with a wipe.
- ✗ Do not hand wash single use instruments.

This SAFETY TASK PROCEDURE does not necessarily cover all possible hazards associated with this task and should be used in conjunction with other references such as the manufacturer's instructions.
It is designed as a guide to be used to complement training and as a reminder to ensure prior to undertaking this task.

ESSENTIAL HAZARDS

- ⚠ Occupational sharps injury




- Controlled environment

Single Use Metal Instrument recycling

Hospitals North - Primary Health
Safety Task Procedure
Management of Contaminated and Visually Clean Single Use Metal instruments for Recycling.

Date issued: 24/10/2025 Review Date: 24/10/2025

 Gloves must be worn when handling visibly soiled single use metal instruments.

EQUIPMENT REQUIRED FOR VISUALLY CONTAMINATED
Wire mesh basket
Waste washer

PERSONAL PROTECTIVE EQUIPMENT REQUIRED

Visually contaminated single use metal instruments.

DO

- ✓ Put visibly contaminated single use metal instruments in wire mesh basket.
- ✓ Put wire mesh basket in waste washer on a high-level disinfection cycle.
- ✓ Once disinfected put in designated rigid, puncture proof plastic box with secure lid and transfer down to House services for recycling.

Visually clean single use metal instruments.

DO

- ✓ Put in designated labelled rigid puncture proof plastic container with secure lid and transfer to House services Level 2 LGH for recycling.

DO NOT

- ✗ Do not wipe single use instruments with a wipe.
- ✗ Do not hand wash single use instruments.

This SAFETY TASK PROCEDURE does not necessarily cover all possible hazards associated with this task and should be used in conjunction with other references such as the manufacturer's instructions.
It is designed as a guide to be used to complement training and as a reminder to ensure prior to undertaking this task.

ESSENTIAL HAZARDS

- ⚠ Occupational sharps injury




- Controlled environment
- Safe management of SUMI

Single Use Metal Instrument recycling

Hospitals North - Primary Health
Safety Task Procedure
Management of Contaminated and Visually Clean Single Use Metal instruments for Recycling.

Date Issued: 24/10/2025 Review Date: 24/10/2025

 Gloves must be worn when handling visibly soiled single use metal instruments.

EQUIPMENT REQUIRED FOR VISUALLY CONTAMINATED
Wire mesh basket
Wipe washer

ESSENTIAL PROTECTIVE EQUIPMENT REQUIRED

Visually contaminated single use metal instruments.

DO

- ✓ Put visibly contaminated single use metal instruments in wire mesh basket.
- ✓ Put wire mesh basket in wipe washer on a high-level disinfection cycle.
- ✓ Once disinfected put in designated rigid, puncture proof plastic box with secure lid and transfer down to House services for recycling.

Visually clean single use metal instruments.

DO

- ✓ Put in designated labelled rigid puncture proof plastic container with secure lid and transfer to House services Level 2 LGH for recycling.

DO NOT

- ✗ Do not wipe single use instruments with a wipe.
- ✗ Do not hand wash single use instruments.

This SAFETY TASK PROCEDURE does not necessarily cover all possible hazards associated with this task and should be used in conjunction with other references such as the manufacturer's instructions.
It is designed as a guide to be used to complement training and as a reminder to ensure prior to undertaking this task.

ESSENTIAL HAZARDS

- ⚠ Occupational sharps injury




- Controlled environment
- Safe management of SUMI
- Robust SOP

Single Use Metal Instrument recycling

Hospitals North - Primary Health
Safety Task Procedure
Management of Contaminated and Visually Clean Single Use Metal instruments for Recycling.

Date Issued: ~~2019~~ 21/10/2025 Review Date: 21/10/2025

 Gloves must be worn when handling visibly soiled single use metal instruments.

EQUIPMENT REQUIRED FOR VISUALLY CONTAMINATED
Wire mesh basket
Wipe washer

ESSENTIAL PROTECTIVE EQUIPMENT REQUIRED

Visually contaminated single use metal instruments.

DO

- ✓ Put visibly contaminated single use metal instruments in wire mesh basket.
- ✓ Put wire mesh basket in wipe washer on a high-level disinfection cycle.
- ✓ Once disinfected put in designated rigid, puncture proof plastic box with secure lid and transfer down to House services for recycling.

Visually clean single use metal instruments.

DO

- ✓ Put in designated labelled rigid puncture proof plastic container with secure lid and transfer to House services Level 2 LGH for recycling.

DO NOT

- ✗ Do not wipe single use instruments with a wipe.
- ✗ Do not hand wash single use instruments.

This SAFETY TASK PROCEDURE does not necessarily cover all possible hazards associated with this task and should be used in conjunction with other references such as the manufacturer's instructions.
It is designed as a guide to be used to complement training and as a reminder to ensure prior to undertaking this task.

ESSENTIAL HAZARDS

- ⚠ Occupational sharps injury




- Controlled environment
- Safe management of SUMI
- Robust SOP
- Primary Health engagement

Single Use Metal Instrument recycling

Hospitals North - Primary Health
Safety Task Procedure
**Management of Contaminated and Visually Clean
Single Use Metal instruments for Recycling.**

Date Issued: ~~2019~~ 24/10/2025 Review Date: 24/10/2025

 Gloves must be worn when handling visibly soiled single use metal instruments.

EQUIPMENT REQUIRED FOR VISUALLY CONTAMINATED
Wire mesh basket
Waste washer

PERSONAL PROTECTIVE EQUIPMENT REQUIRED

Visually contaminated single use metal instruments.

DO

- ✓ Put visibly contaminated single use metal instruments in wire mesh basket.
- ✓ Put wire mesh basket in waste washer on a high-level disinfection cycle.
- ✓ Once disinfected put in designated rigid, puncture proof plastic box with secure lid and transfer down to House services for recycling.

Visually clean single use metal instruments.

DO

- ✓ Put in designated labelled rigid puncture proof plastic container with secure lid and transfer to House services Level 2 LGH for recycling.

DO NOT

- ✗ Do not wipe single use instruments with a wipe.
- ✗ Do not hand wash single use instruments.

This SAFETY TASK PROCEDURE does not necessarily cover all possible hazards associated with this task and should be used in conjunction with other references such as the manufacturer's instructions. It is designed as a guide to be used to complement training and as a reminder to ensure prior to undertaking this task.

ESSENTIAL HAZARDS

- ⚠ Occupational sharps injury



- Controlled environment
- Safe management of SUMI
- Robust SOP
- Primary Health engagement
- Transport back to LGH





160 kg collected & smelted





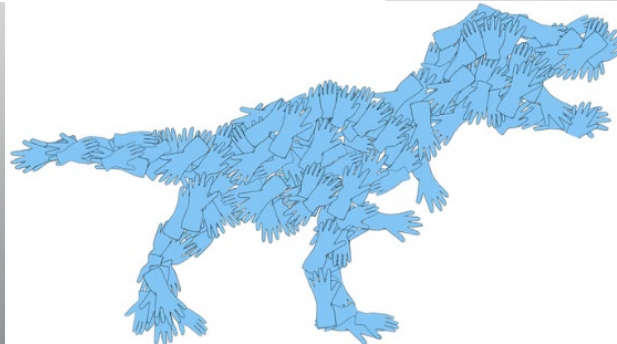
GLOVES OFF!

Clean hands.
Safe for all.



NHS

Great Ormond Street
Hospital for Children
NHS Foundation Trust



GLOVES Off !

- Adopted & adapted from the Great Ormond street Hospital for children & John Hunter programmes
- Focus on reducing inappropriate use of non-sterile gloves in a clinical setting.

HOSPITALS NORTH GLOVE USAGE



- **906,083** non-sterile gloves a month
- **10,873,000** non-sterile gloves a year

HOSPITALS NORTH GLOVE USAGE



- **906,083 non-sterile gloves a month**
- **10,873,000 non-sterile gloves a year**

**Equivalent to 210.3 laps
in average sized car**

Annual glove waste carbon footprint equivalent km's driven by
car is 1,026,894 km's per year.

Tassie coast line 4882km's



HOSPITALS NORTH GLOVE USAGE

- **906,083** non-sterile gloves a month
- **10,873,000** non-sterile gloves a year



**Equivalent to 210.3 laps
in average sized car**

Annual glove waste carbon footprint equivalent km's driven by
car is 1,026,894 km's per year.

Tassie coast line 4882km's



Gloves end to end 742 times around Tassie coast



Gloves (non sterile) **GLOVES OFF!**
Clean hands. Safe for all.

Need to be used for:

- Blood and body fluids
- Clinical waste and contaminated linen
- Cytotoxic

Remember to dispose of gloves responsibly

Department of Health Tasmanian Government

Gloves (non sterile) **GLOVES OFF!**
Clean hands. Safe for all.

Require changing when you:

- Are moving between patients
- Have torn gloves
- Move between risk areas

Remember to maintain good hand hygiene

Department of Health Tasmanian Government

GLOVES OFF!
Clean hands. Safe for all.

 +  =

1200 years to breakdown

September 2024

Department of Health Tasmanian Government

Environmental Impact **GLOVES OFF!**
Clean hands. Safe for all.

Gloves can take up to 200 years to breakdown depending on conditions

Glove microplastics can be found in the food chain by animals and marine life ingesting microplastics

Gloves break down into microplastics

Gloves in a waste bag, takes up to 1,200 years depending on conditions

Chemical additives used to make gloves more user friendly leach out and contaminate the environment as they breakdown

Each glove generates 34g CO₂

Remember to dispose of gloves responsibly

Department of Health Tasmanian Government

Gloves and drugs

Disposal of gloves on discharge from rooms inhabited by patients with MROs

Promotional resources

- Pull up banners
- Posters
- Tags which can be put on computers as reminders
- Badges
- Screen savers, background for Teams meetings & Signature blocks
- Tee shirts turning them into regular uniform
- Tattoos



Conversation starter..... Hand Hygiene Day & Nurses & Midwives EXPO



- ACIPC & WHO messaging
- Location location location



Gloves Off trial outcome



	ED	5B	Campbell Town
Reduction of glove purchasing ↓	2.3% ↓	16 % ↓	26 %
Hand hygiene moments missed due to inappropriate glove use Pre & Post	49 % ↓ 22%	48% ↓ 11%	73% ↓ 47%
Hand hygiene Compliance	45% ↑ 56%	75% ↑ 80%	Static above bench mark

Challenges

- Agency and Locum staff
- Guru changes
- Traction with Tertiary education supporting change in practise



Change is hardest at the beginning, messiest in the middle and best at the end.

Robin S. Sharma



Special thanks to

Fiona De Sousa, Nurse Unit Manager, Infection Prevention and Control,
Launceston General Hospital

Leasa Giles , Clinical Nurse Educator, Infection Prevention and Control, Launceston
General Hospital

Tyler Brown, Manager House services, Launceston General Hospital, WARM
member

Nathan Deegan, Veolia

Darren Higgins, Veolia

References

- [Australasian Health Facility Guidelines | AusHFG](#) viewed 10/05/2025
- AORN, 2006, Recommended practises for environmental cleaning in surgical practise setting. Standards, recommended practices, and guidelines. Denver. pp.551-557
- Australian Guidelines for the Prevention and Control of Infection in Healthcare [Australian Guidelines for the Prevention and Control of Infection in Healthcare \(nhmrc.gov.au\)](#)
- Azouz, S, Boyll, P, Swanson, M, Castel, N, Maffi, T, & Rebecca, AM et al 2019 'Managing barriers to recycling in the operating room'. *The American Journal of Surgery*, vol. 217 pp 634-638
- Bolten, A, Kringos, DS, Spijlerman, IJB, Sperna Weiland, NH 2022, *Journal of Hospital Infection*, vol 128 pp 64-73
- Chakraborty, S, Kumar Saha, A 2022, 'A framework for LR fuzzy AHP and fuzzy WASPAS for Health care waste recycling. technology' *Applied Soft Computing*, Vol. 127, 109388 pp. 1-17 CLINICAL EXCELLENCE COMMISSION
- INFECTION PREVENTION AND CONTROL PRACTICE HANDBOOK [Infection Prevention and Control Practice Handbook \(nsw.gov.au\)](#)
- French, H 1994 'Blueprint for reducing, reusing recycling' *AORN journal*, vol 6 pp 94-98
- Global Green and Healthy Hospitals report , 2016 Recycling of Single Use Metal Instruments, Western Health Victoria
- Hicks, P, Huckson, S, Fenney, E, Leggett, I, Pilcher, D & Litton, E , 2019 The financial cost of intensive care in Australia: a multicentre registry study. *The Medical Journal of Australia* vol. 211 no. 7 pp. 324-325
- [International Council of Nurses calls for increased nursing leadership to combat effects of climate change on health | ICN - International Council of Nurses](#) viewed 4/05/25
- INFECTION PREVENTION AND CONTROL PRACTICE HANDBOOK [Infection Prevention and Control Practice Handbook \(nsw.gov.au\)](#)
- Jamal, H., Lyne, A., Ashley, P., & Duane, B. (2021). Non-sterile examination gloves and sterile surgical gloves: Which are more sustainable? *Journal of Hospital Infection*, 118, 87–95. <https://doi.org/10.1016/j.jhin.2021.10.001>
- Jeffries, S. D., Tu, Z., Xu, H., Harutyunyan, R., & Hemmerling, T. M. (2023). Use of hand sanitiser as a potential substitution for nonsterile gloves in reducing carbon emissions. *British Journal of Anaesthesia*, 131(1). <https://doi.org/10.1016/j.bja.2023.03.029>

References continued

- McGain F, White S, Mossenson S, Kayak E, Story D 2012 , 'A survey of anesthesiologists' views of operating room recycling'. *Anesth Analg*. May vol. 114, no.5 pp 1049-54.
- Misrai, V, Rijo, E, Cottenceau, J-B, Zorn, C, Enikeev, D, Elterman, D, Bhojani, N, De La Taille, A, Herrmann, TRW, Robert, G, Pradere, B. 2021 'A Standardized Method for Estimating the Carbon Footprint of Disposable Minimally Invasive Surgical Devices: Application in Transurethral Prostate Surgery'. *Annals of Surgery Open*: September Vol. 2 – I. 3 - e094
- NSW Circular, 2021 Plastics in Healthcare: 'A Playbook for your Hospital'
- Pradere, B, Mallet, R, De la Taille, A, Bladou , F, Prunet , D, Beurrier, S, Bardet, F, Game, X, Fournier, G, Lechevallier, E, Meria, P, Matillon, X, Polguer , T, Adid, N, De Graeve, B, Kassab, D, Mejean , A, Misrai, V, Pinar, U, 2022. 'Climate-smart Actions in the Operating Theatre for Improving Sustainability Practises: A systematic Review' *European Urology*, PP. 1-12
- [Robin S. Sharma Quote: "Change is hardest at the beginning, messiest in the middle and best at the end."](#) accessed 10/5/2024
- Royal College of Nursing 2016 Standards for infusion therapy 4th ed, pp 1-113
- Saber, D 2020, 'Healthcare's role in environmental sustainability', *American Nurses Journal* vol. 15, no.10 pp.50-53
- Tudor T, Barr S, Gilg A 2007, 'Linking intended behaviour and actions: a case study of healthcare waste management in Cornwall NHS' *Resources, Conservation & Recycling* vol. 55, I.1 pp. 1-23
- Wilson J, Bak A, Whitfield A, et al. (2017b) Public perceptions of the use of gloves by healthcare workers and comparison with perceptions of student nurses. *Journal of Infection Prevention* 18(3): 123–132.
- Wilson J, Prieto J. Re-visiting contact precautions – 25 years on. *Journal of Infection Prevention*. 2021;22(6):242-244. doi:10.1177/17571774211059988